

### DETTAGLI

- Elastico in vita tergisudore
- Passanti cintura
- Bottone 4 fori - Chiusura zip
- 2 tasche - 2 tasche sul retro
- Inserto in rete traspirante

### TAGLIE

XS ÷ 4XL  
Slim Fit

### COLORE

00 Bianco  
000 Nero

### TESSUTO

97% cotone  
3% elastan  
185 g / m<sup>2</sup>



Le misure indicate si riferiscono alle taglie **S** per i capi femminili, **L** per i capi maschili. Per i capi a taglia unica le misure indicate sono effettive.

Uno dei Best sellers Giblor's! Unisex, massimo comfort e vestibilità eccellente.

### COLORI DISPONIBILI



00 Bianco



000 Nero

TABELLE TAGLIE  
E CORRISPONDENZE

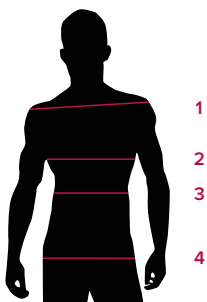


TABELLA ST-P4 SLIM FIT

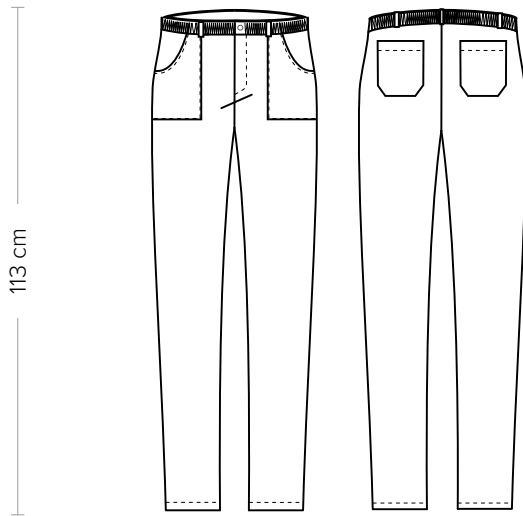
TAGLIA	XS	S	M	L	XL	XXL	3XL	4XL
1 - SPALLE								
2 - CIRCONFERENZA TORACE								
3 - CIRCONFERENZA VITA	69-76	76-80	80-84	84-88	88-94	94-100	100-106	106-112
4 - CIRCONFERENZA BACINO	86-92	92-96	96-100	100-104	104-110	110-116	116-122	122-128

**GUIDA ALLE TAGLIE** **1)** Prendere le misure anatomiche (corpo con abbigliamento intimo) senza stringere mantenendo ben teso il metro. **Nota:** nel caso vogliate indossare dei camici già con dell'abbigliamento sotto prendete le misure già abbigliati. **2)** Nel caso tra le misure prese vi fosse una misura a cavallo fra 2 taglie vi consigliamo di prendere quella più grande. **3)** Le misure della tabella sono espresse in centimetri.

# ENOCH

ITEM CODE  
15P08P654

**Giblor's**  
italian work/life specialist



### DETAILS

- Elasticated sweatband
- Belt loops
- 4-hole button - Zip fly
- 2 pockets - 2 rear pockets
- Network fabric panel

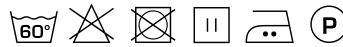
**SIZES**  
XS ÷ 4XL  
Slim Fit

### COLOURS

- 00 White
- 000 Black

### FABRIC

- 97% cotton
- 3% elastane
- 185 g / m<sup>2</sup>



The measures indicated refer to sizes **S** for women, **L** for men. For one-size-fits-all garments, the measurements indicated are effective.

One of Giblor's best sellers! Unisex, with the utmost comfort and excellent wearability.

### AVAILABLE COLOURS



00 White



000 Black

SIZE TABLES  
AND CORRESPONDENCES

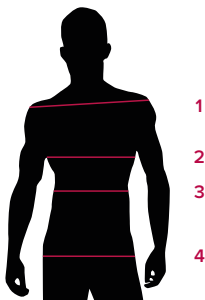


TABLE ST-P4 SLIM FIT

SIZE	XS	S	M	L	XL	XXL	3XL	4XL
1 - SHOULDERS								
2 - CHEST CIRCUMFERENCE								
3 - WAIST CIRCUMFERENCE	69-76	76-80	80-84	84-88	88-94	94-100	100-106	106-112
4 - HIPS CIRCUMFERENCE	86-92	92-96	96-100	100-104	104-110	110-116	116-122	122-128

**SIZE GUIDE** **1)** Take the anatomical measurements (body with underwear) without tightening, keeping the measuring tape taut. Note: in case you want to wear of the gowns already with the clothing underneath take the measurements already dressed. **2)** If there is a measure between 2 sizes between the measurements taken, we advise you to take the bigger one. **3)** The measurements in the table are expressed in centimeters.